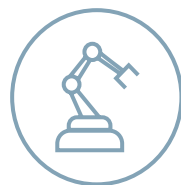
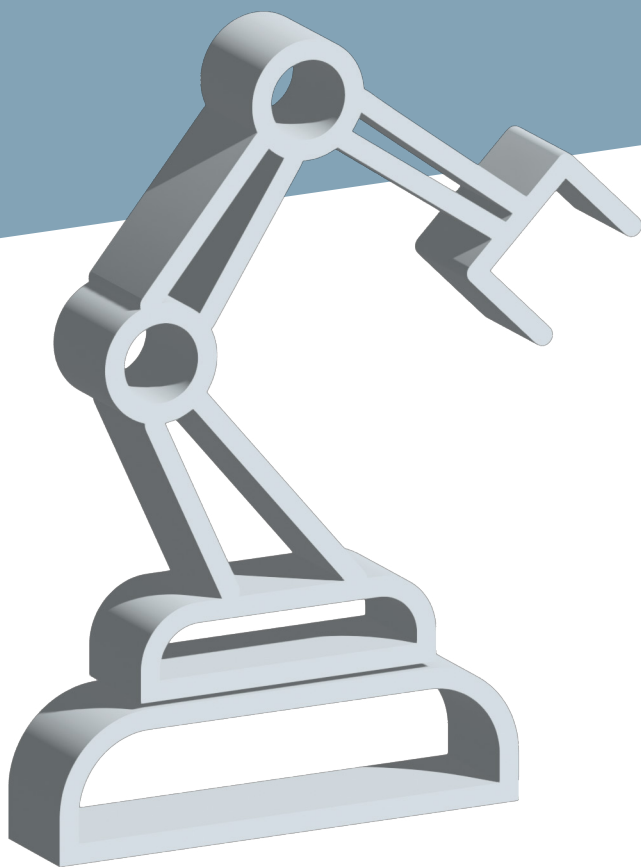


*Our*

# MACHINE GUARDS

*simplify everyday life!*



  
**Garantell**



*Machine guards*  
*solve* **MANY WORRIES**  
**AND NEEDS,**

*offering far more functions than the name suggests.  
They are customized to meet all your needs.*



**Garantell**







# IN NEED OF AN INDUSTRIAL WALL MATCHING YOUR OBJECTIVES?

Our walls serve various industrial purposes, such as safety barriers, partitioning, allowing ventilation, creating security, or just creating a cool look. The mesh grids we offer are determined by the intended purpose.

*In need of a **safety barrier**?*

If you want to protect people from accessing hazardous dangerous areas, such as machines in operation or dangerous materials, we recommend using a 20x100mm mesh grid. This choice ensures compliance with safety standards.





## *In need of **security**?*

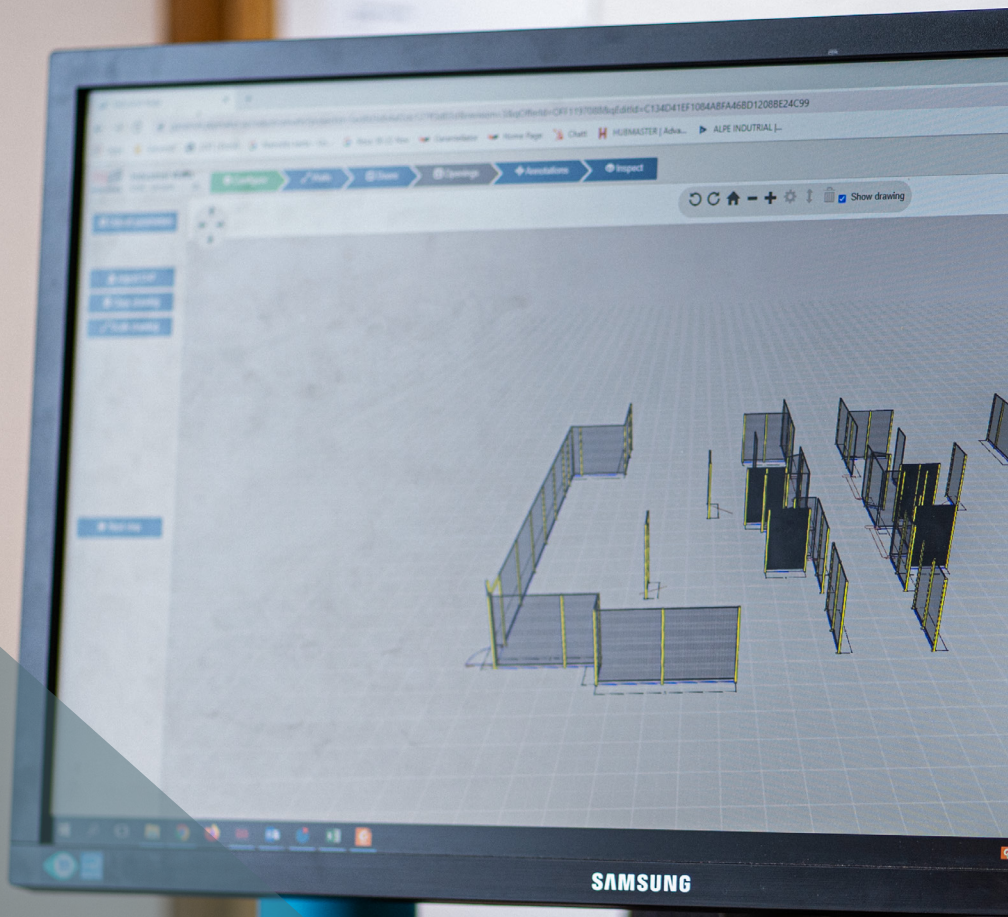
When the primary focus is safeguarding goods rather than people, we suggest to go for a 50x50mm mesh grid. Additionally, our mesh grids are available in wire thickness of 2.5x2.5, 3x4 or 5x5 mm.

## *In need of **partitioning**?*

Our walls can effectively divide sections within a building, enabling the creation of for instance storage spaces or distinct work areas. For simple partitioning purposes, a 50x100mm mesh grid is suitable.

You also have the option to combine different mesh grids, providing flexibility to find the best solution for your needs while ensuring the optimal balance of price and quality.







# IN NEED OF A SOLUTION THAT WILL FIT PERFECTLY?

*When it comes to measurements,  
we don't believe in standards.*

**Our machine guards offer adjustable heights in 100mm increments**, ensuring a precise fit for your requirements. In terms of width, our panels and doors are customizable in 10mm steps, allowing for precise design adjustments. This means our solutions will always align perfectly with your needs.

**By producing everything on demand, we eliminate waste and unnecessary stock.** We don't operate through multiple offices or chains, but rather manufacture everything in Sweden onsite. This streamlined approach allows us to offer exceptional price-quality value for our products.







# IN NEED OF DIFFERENT DOORS AND LOCK FUNCTIONS?

*We offer a variety of door designs.*

**Choose from hinged doors, top rail sliding doors, or telescopic doors.** The functionality of a door is closely tied to selecting the right lock. When storing goods with multiple individual users, a padlock comes in handy. Most customers prefer a Eurolock with a cylinder. If you need of a panic door, you can opt for a door equipped with a panic bar or a handle.

*In industrial surroundings, safety switches are common.*

Their function is to lock protective devices securely and prevent access to areas which are protected by such devices.





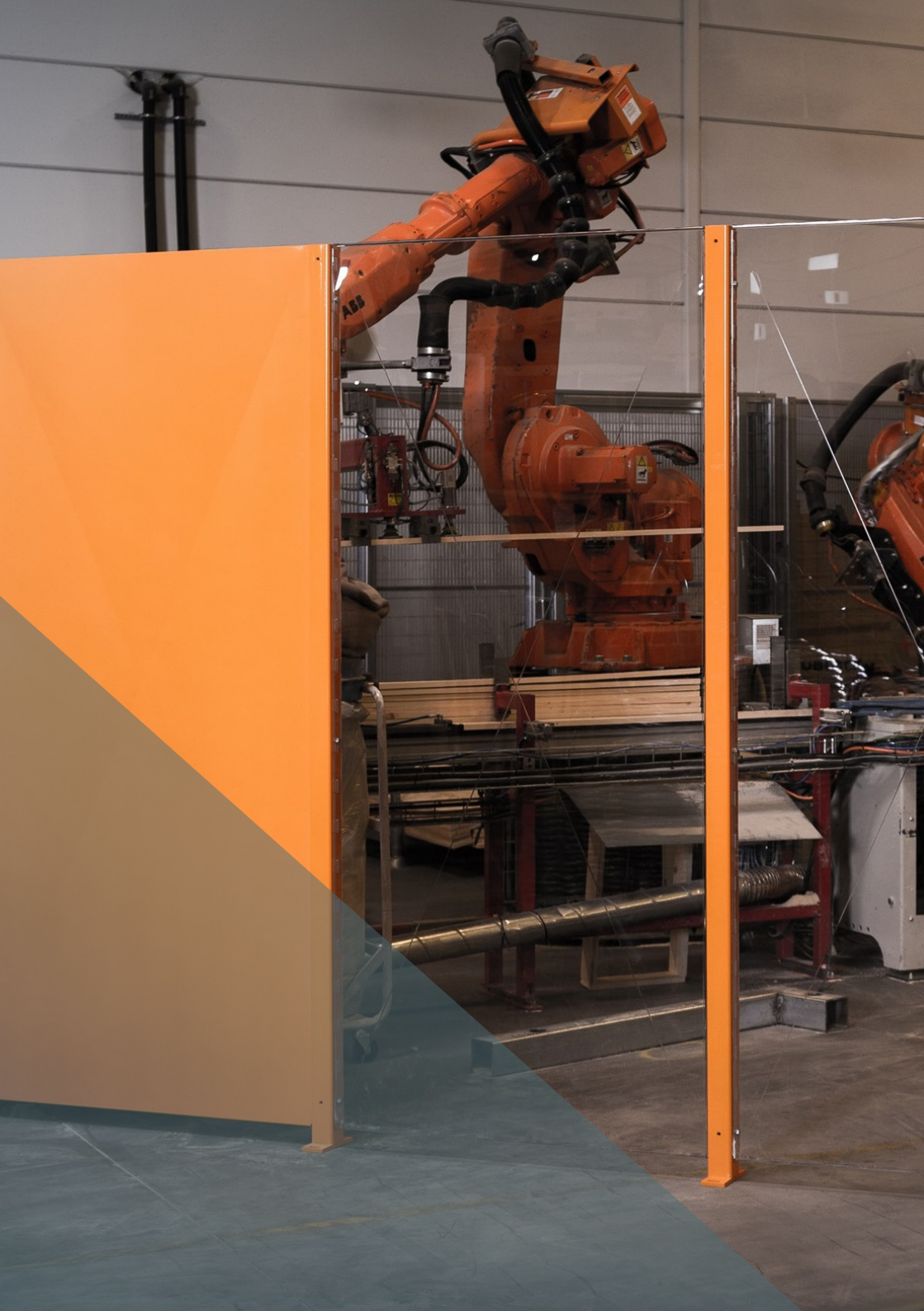
**Safety switches with locking functionality** ensure that people cannot open protective devices until potentially hazardous conditions, such as machine overrun movements, have ceased or uninterrupted machine processes have been completed.

In certain situations, it becomes crucial to ensure that machines halt safely in the event of faults or danger. As complexity increases, so do the requirements for integrating safety sensors into the machine.

*In all these cases, safety switches can be implemented.*

As the market has a lot of brands, and as safety switches can have different functions, we can prepare your door for this devices, by adding the fitting and not the switch itself.





# IN NEED OF SHIELDING OR FOR SEEING THINGS?

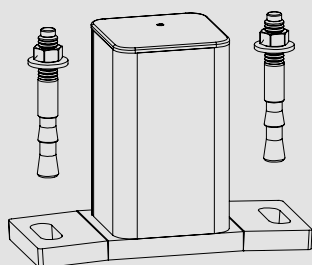
*Our machine guards offer options beyond mesh.*

We provide steel plates that are 0.7mm thick, which are ideal for shielding the view. Additionally, we offer polycarbonate panels that are 4.0mm thick. These panels are perfect in surroundings where you want to see through walls without the mesh view. With polycarbonate, it becomes easier to observe the machine's operations.

Moreover, we provide the flexibility to combine all three materials - steel plates, mesh, and polycarbonate. For example, you can use steel plates for specific areas that require complete shielding, mesh for optimal air flow, and polycarbonate for effective lighting and an unobstructed view.

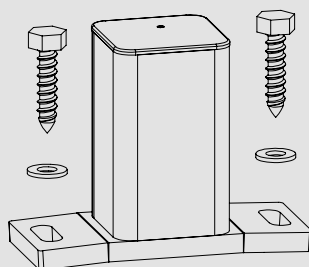






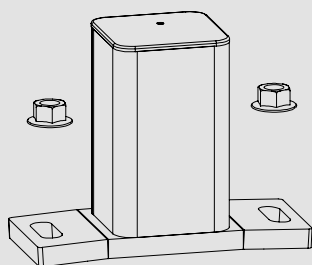
1

**Concrete**

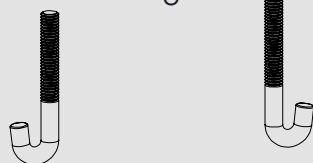


2

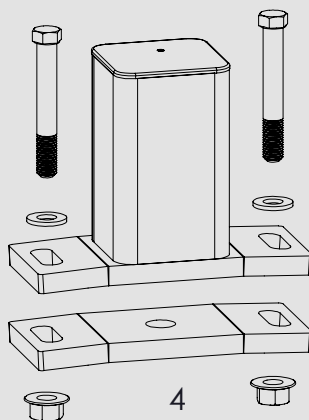
**Wood**



3



**Grating**



4

**Steel plate**

# IN NEED OF MESH WALLS ON DIFFERENT TYPES OF FLOORS?

*Our partitioning systems are designed to cater to various floor types, ensuring a secure installation.*

While concrete flat floors are commonly found, we understand that not every space has this type of flooring. In such cases, we offer specialized screws to accommodate different floor types.

We have **French screws** for wooden floors, **J-hooks** to work on a floor grating, for instance at a mezzanine. For a brittle or unstable floor, we can provide **chemical anchors and shims plates** to help you level out your partitioning. **Steel under plates** are used when you need your partition to be extra stable, for example, on a floor grating.







# IN NEED OF AN EASY ASSEMBLY?

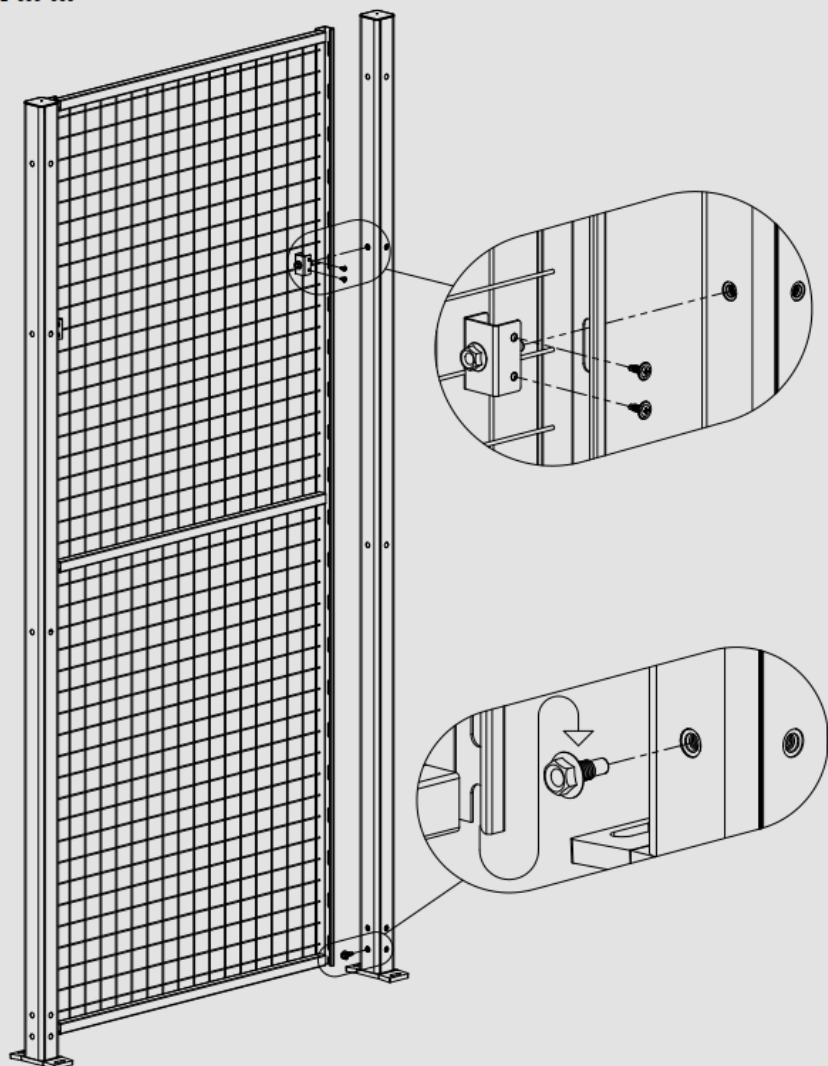
*Our partitions are designed for easy installation with built-in welded nuts, enabling assembly even by a single person.*

The custom design eliminates the need for on-site cutting, saves time and minimizes the risk of missing or incorrect components. Additionally, all doors are pre-assembled in our factory and delivered ready for installation.



## WALL WITH RETAINED BOLTS

702-003-003



# IN NEED OF OPENING A FENCE FOR MAINTENANCE?

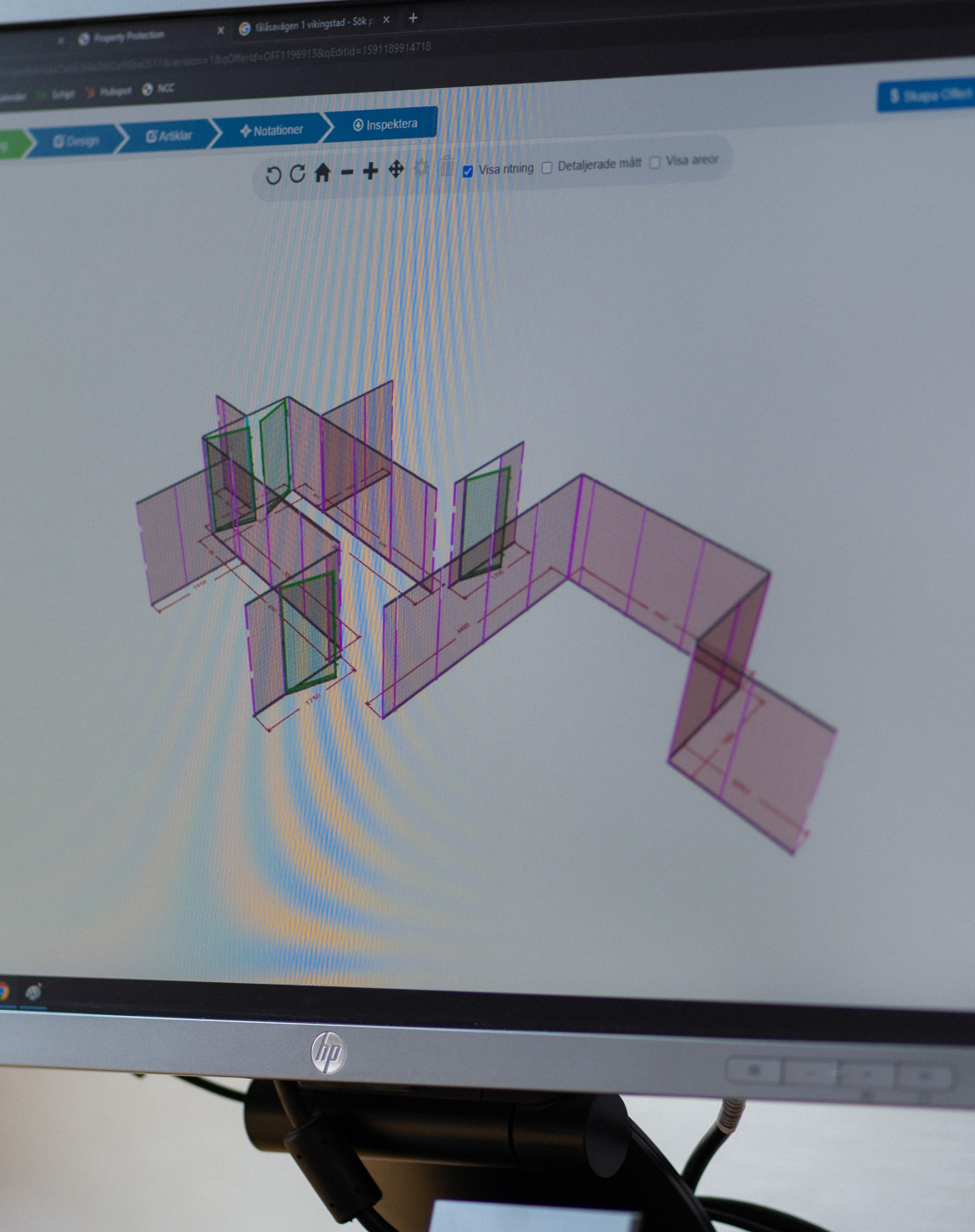
*Our fixed guards can be quickly and easily removed for maintenance purposes using a release function known as quick fixing.*

The upper bolt will remain attached to the panel while the bottom bolt remains in the post. The panel can be reinserted into the opening by leaning on the bottom bolt. It is crucial to note that, in adherence to safety standards and regulations, if the fence requires frequent opening (more than once per month), it is recommended to install a door.

This function is an option to the regular fittings for panels.







# IN NEED OF A PERFECT LAYOUT?

Designing fences can be a complex task, especially in industrial settings where considerations must be made for machinery, building details, and compliance with various safety norms and standards.

Fortunately, our design program, the Garantellator, is here to simplify the process. You upload your plan in the configurator, start to draw your fences using the plan as a background reference. It will always fit.

*Furthermore, the Garantellator is available day and night. Anytime, anywhere, anyhow.*







# IN NEED OF COLOURED FENCES?

*Of course, coloring your life is always fun.*

Using company colors to make a statement even with fences is an esthetical dream. Furthermore, colors also have a safety function when using machine guards. Using a plain color such as black, grey... allows you to see through the mesh. The posts on the other hand are better in bright colors, as you want to highlight the position of the fence. Here bright colors such as yellow, orange, pink... can come in handy.

**Whatever your need is, we can deliver machine guards in almost all different ral colors.**





# IN NEED OF AN OPENING IN YOUR WALL?

*Cutting kits are available to enable both vertical and horizontal adaptation on-site.*

For instance, when installing a conveyor, the cutting kits allow you to precisely cut elements and reattach the stable side securely. In situations where you require an opening but want to avoid any potential risks associated with open and sharp wire edges, we offer rubber edge protection.

**This protective feature ensures there are no exposed sharp edges that could potentially harm individuals or damage products.**







# IN NEED OF DOORS WHERE REACH TRUCKS AND OTHER HIGH VEHICLES CAN EASILY PASS?

*Our floor sliding doors will do the trick.*

**They have no top rail and slide very smoothly because of their wheels.** This eliminates the need for a Z-profile or upper beam. There are no obstacles on the floor, such as guiding profiles and vehicles can pass the door easy. In addition, our floor sliding doors open telescopically and save a lot of space in the opened state. They are available until a height of 2300mm. When a higher height is needed, a made-to-measure solution can be designed, such as double hinged doors with a higher top.





# IN NEED OF DOORS WITHOUT MIDDLE PANEL?

*If you require a door without middle panel, we have a solution we playfully call wardrobe doors.*

These doors offer the advantage of not requiring any space to open. The door blade will open in front or behind the other door, allowing for convenient access without obstructing other areas of the facility.

Wardrobe doors are particularly beneficial in warehouses with high circulation, where the ability to open the door on two sides proves advantageous. They are also useful when you need a sliding door in front of a racking system and want both sides to have the flexibility to open.







# IN NEED OF PROTECTING GOODS IN A PALLET RACKING?

*Whether your goal is to keep goods safe or ensure the safety of individuals working near the goods, our partitioning walls are designed to meet your needs.*

We can construct a cage around the racking, providing enhanced safety and security.

In some cases, a complete cage with a roof may not be necessary. Instead, you may require doors to secure access to the racking.

Considering that racking systems can be quite high, it becomes crucial for the cages to be solid and sturdy. Our partitioning walls can reach heights of up to 10500mm with a floor distance of 180mm, ensuring the necessary stability and protection.



## *Our posts are available in different configurations to suit various requirements.*

We offer single posts measuring 60x60mm. For added stability, we provide double posts in two configurations: 60x220mm and the tallest option at 60x320mm. If you need even greater height, we have special solutions that can be programmed to accommodate heights beyond 10500mm. While the programming process can be complex, our R&D technical experts have successfully executed projects reaching heights of up to 12000mm.









# IN NEED OF KEEPING EXPLOSIVE CONTAINERS (AEROSOLS) CONTAINED?

*Our mesh walls are versatile and can be utilized to create aerosol cages with a roof, specifically designed to ensure the safety of warehouses that store hazardous containers.*

This is a common requirement to comply with sprinkler and fire safety standards.

To meet your specific needs, we can design a cage that precisely fits your requirements. Our mesh grid features a 50x50mm pattern, available in either 3x4mm or 5mm wire thickness. You have the flexibility to choose the wire thickness based on the building standards and regulations applicable to your facility.





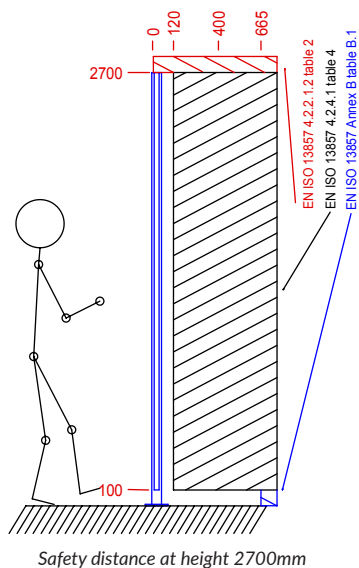
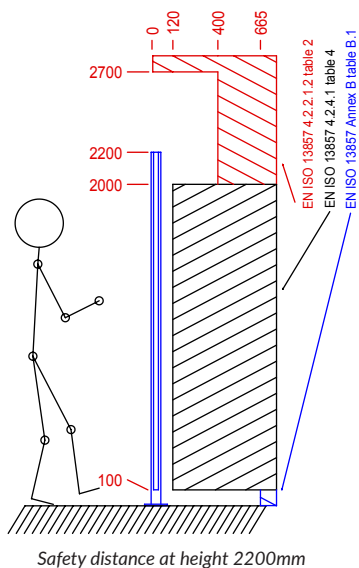
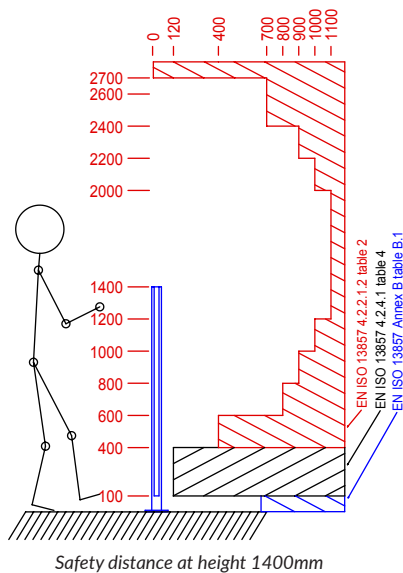
OFF 130A

6

**IN NEED OF  
TECHNICAL  
INPUT?**

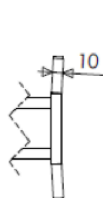
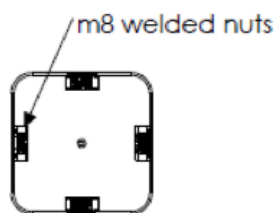
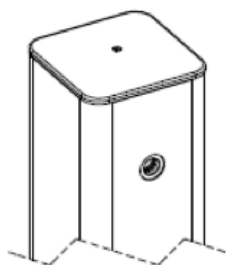
# HANDY NORMS AND STANDARDS

For more standards and directives, we refer to among others the machinery directive 2006/42/EC, ISO 11161, ISO 13855, ISO 14120, ISO 14119.

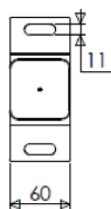




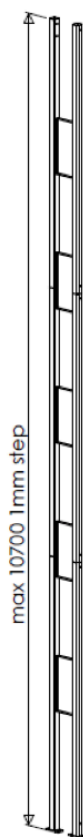
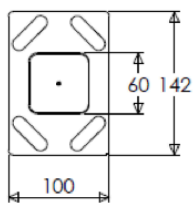
# POSTS



Typ 1

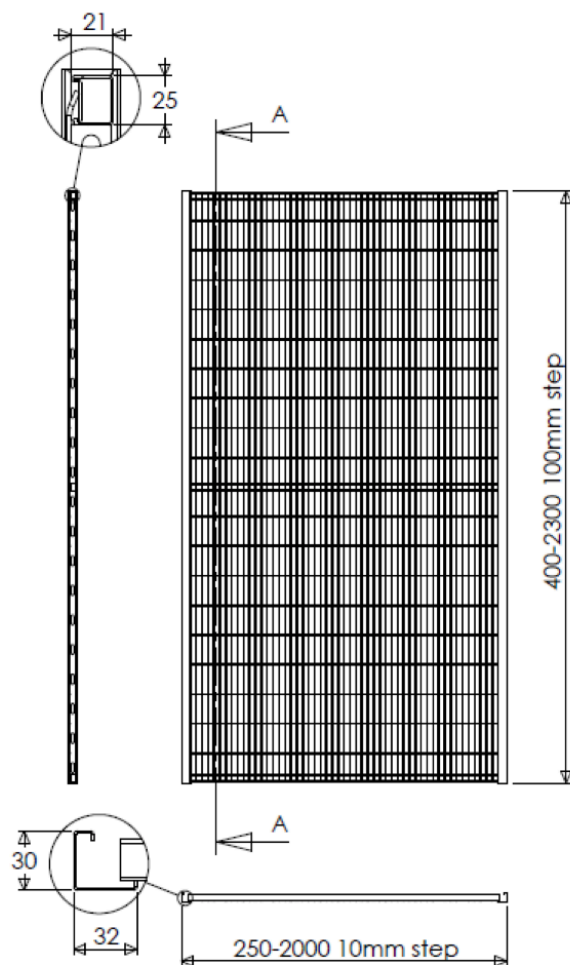


Typ 2





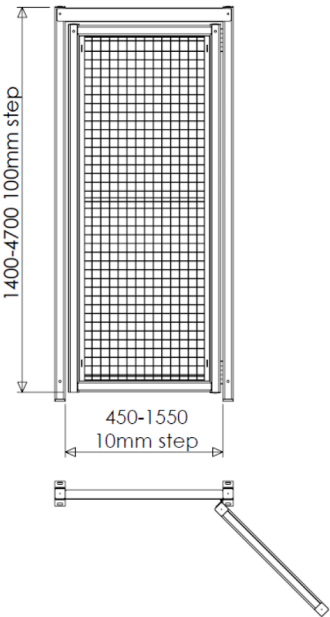
# PANEL



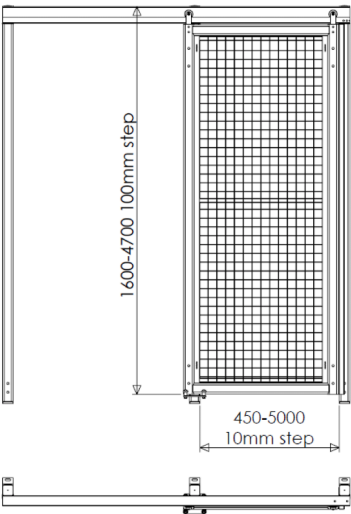
Mesh type	Wire
20x100	Ø 2,5x2,5
50x100	Ø 2,5x2,5
50x50	Ø 2,5x2,5
50x50	Ø 3,0x4,0
50x50	Ø 5,0x5,0

# DOORS

Single hinged door



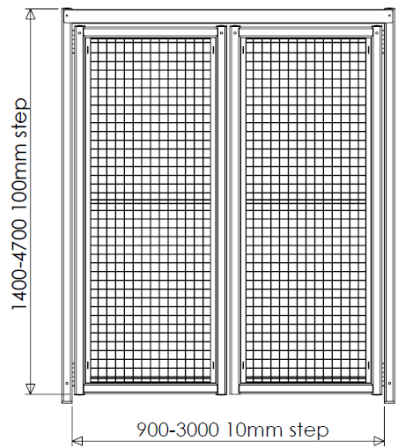
Single top rail door



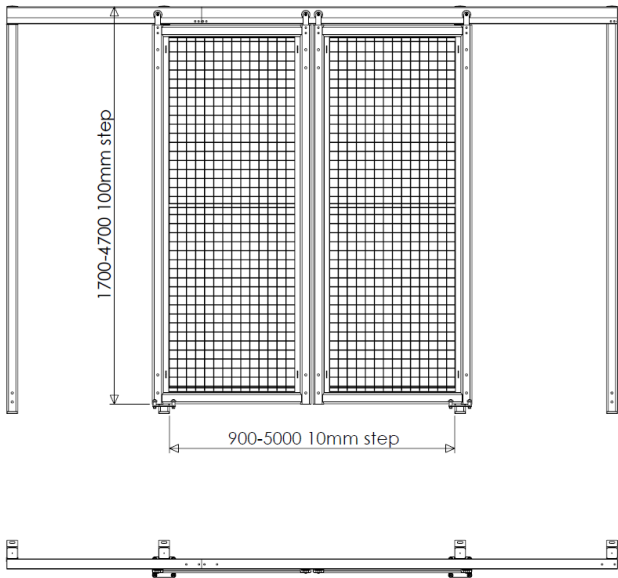




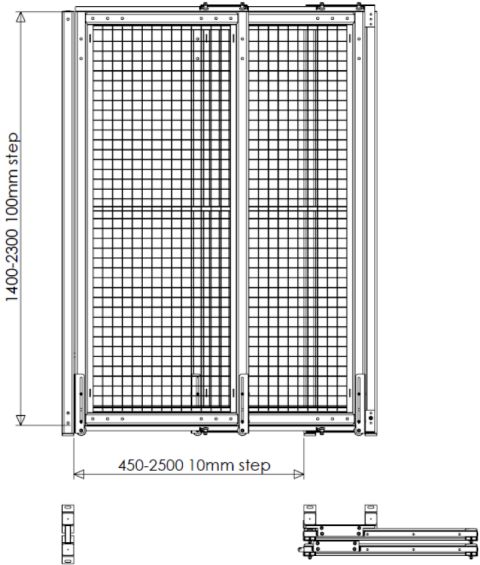
Double hinged door



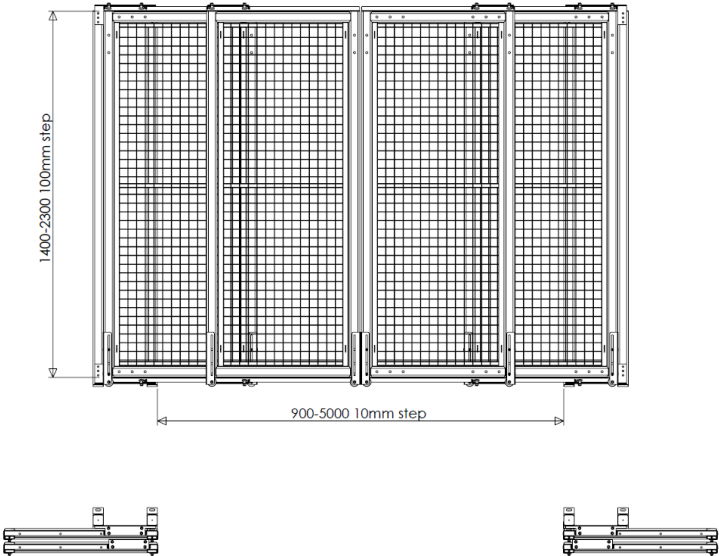
Double top rail door



Single floor sliding door



Double floor sliding door





# LOCK OPTIONS



EURO LOCK WITH  
CYLINDER



WITH PANIC  
FUNCTION (FRONT  
VIEW)



WITH PANIC  
HANDLE (BACK)



WITH PANIC BAR  
(BACK)



PAD LOCK PLATES

The background is composed of several geometric shapes. A large, dark blue triangle occupies the bottom-left portion of the frame. Above it, a lighter blue triangle extends from the top-left corner towards the center. To the right of the dark blue triangle, a white triangle points upwards from the bottom-right corner. The text is positioned in the lower-left area, within the dark blue triangle.

*Simplify  
everyday life!*



# NEED SOME MORE INFORMATION?

## **GARANTELL AB**

Speditörvägen 8  
SE-331 53  
Värnamo, Sweden

+46 370 69 22 30  
[info@garantell.com](mailto:info@garantell.com)





**Garantell**

[www.garantell.com](http://www.garantell.com)